

Pyrotterra Lighttoys

presents

FIRMWARE UPDATE GUIDE



v1.3

(ENG)

Introduction

Firmware update is a process that updates the internal program that controls your FT remotes, Visual, FT and FT2 devices. This guide will walk you through the process.

Why update

Firmware update brings new functionality, improves stability and fixes bugs of your Lighttoys props. It is recommended to perform the update as soon as a new update package from Lighttoys is released.

What you need

To perform the firmware update process, you need to download the LtComposer software (version 3.4 or newer), available from our [downloads page](#) for both Windows and macOS.

LtComposer already contains all the necessary firmware files for the update process, so it can be used as is.

However, since new firmware files are released more frequently than LtComposer versions, it is also highly recommended to check & download the latest firmware package from our [support page](#).

What props are supported

LtComposer supports the firmware update of the following Lighttoys props:

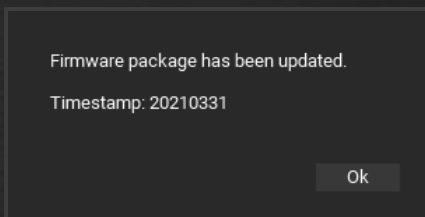
- FT devices (Zebra Poi FT, LED Buugeng FT, ...)
- Visual Poi V4 devices (Poi, Wand)
- FT2 devices (Visual Hoop, FT2 chip)

Before you start

1. Gather all FT remotes and Lighttoys props that you want to update, **make sure their batteries are not depleted.**
2. Find a place with low 2.4GHz radio interference.
3. Launch LtComposer.
4. Optional: install the latest firmware package.

Install the firmware package

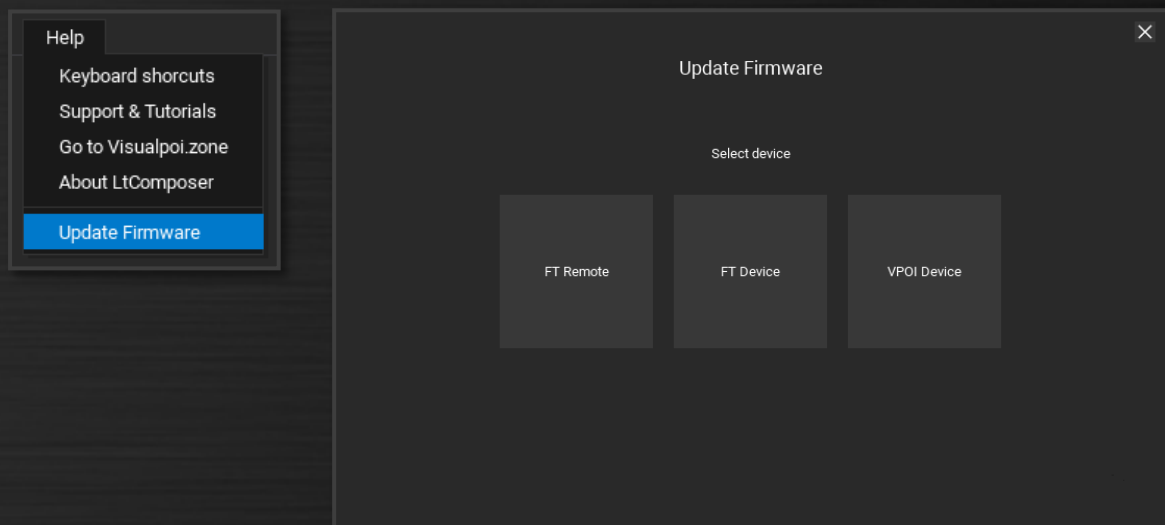
Download the latest firmware package from our [support page](#). Extract the ZIP file, then drag & drop the included **ifw** file (example: **It-firmware-210416.ifw**) into the main window of LtComposer. After doing so, the LtComposer will show a confirmation message:



Click **"Ok"**, the firmware package was successfully installed.

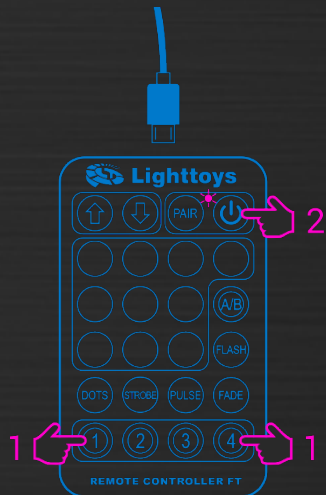
Open the update assistant

To start updating your props, go to the top menu **"Help"** and click on **"Update Firmware"**. A new window with device selection will pop up:



Update FT remotes

First, update all your FT remote controllers one-by-one, by clicking on the “**FT Remote**” square button in the update assistant. Then follow the onscreen instructions until you are finished:



First, make sure the FT remote is turned OFF and not attached to the USB cable.

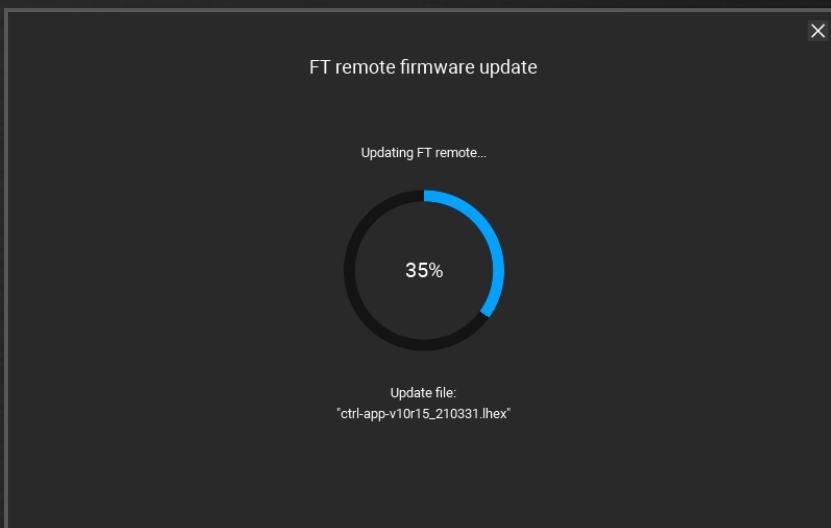
1. Press and hold the button 1 and 4 at the same time, don't release them yet.

2. Click the red ON/OFF button.

3. Release all buttons, the blue indicator LED should start blinking rapidly.

4. Now attach the FT remote to your computer with a USB cable.

Once the FT remote is detected, on the next screen click “**Update**” to start the update process:



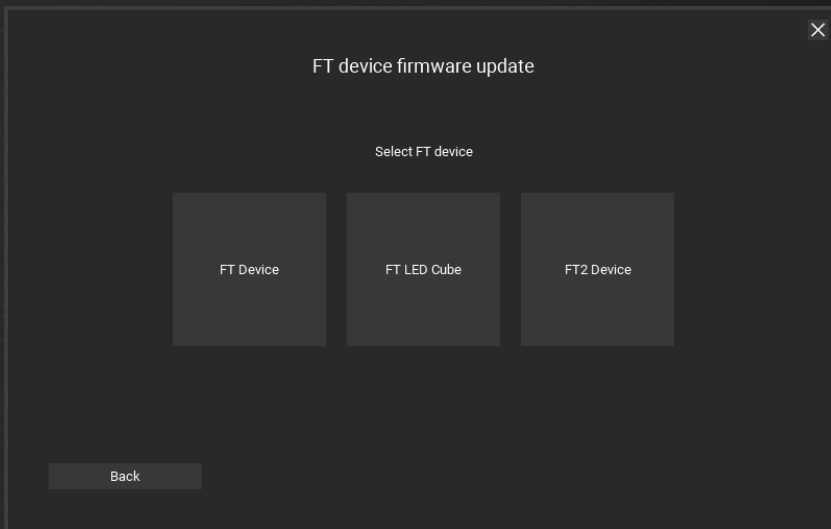
The FT remote is updated, once you see the **Status: SUCCESS** at the next screen.

Unplug the FT remote and continue with the same steps with another FT remote, until all your FT remote controllers are updated.

Update FT devices

To update all your FT and FT2 devices, click on the **“FT Device”** button in the update assistant. You will have the following 3 options to choose from:

- **FT Device**
- **FT LED Cube**
- **FT2 Device**



Since the firmware files are different for each device, **it is important that you select the correct button in this step, otherwise you risk bricking the device!**

Select the **“FT Device”** button for:

Zebra Poi FT

Zebra Stick FT

Fantastick FT

Contastick FT

LED Buugeng FT

LED Fans FT

Moon Fans FT

LED Club FT

Omni Light RGB FT

FT chip

Select the **“FT LED Cube”** button for:

LED Cube FT

Select the **“FT2 Device”** button for:

Visual Hoop

FT2 chip

Follow the onscreen instructions to finish the update process of your FT device. Continue the same way with the next FT device from your arsenal until all your FT devices are updated.

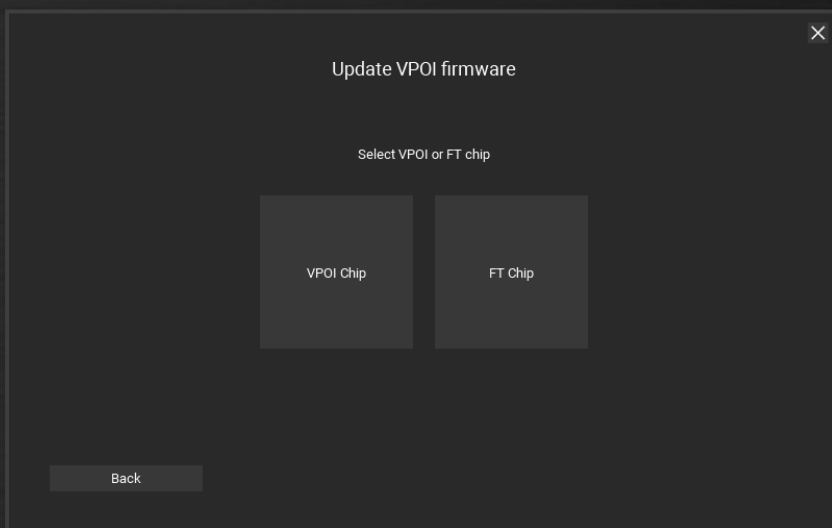
Note: the update can be a 2-step process, depending if the bootloader program is also out of date.

Update Visual Poi devices

To update all your Visual Poi and Visual Wand devices, click on the **“VPOI Device”** button in the update assistant. You will see the following 2 options:

- **VPOI Chip**
- **FT Chip**

The update of Visual devices is a 2-step process, since Visual devices consist of 2 control chips – the VPOI Chip and the FT chip.



Start with the VPOI chip by clicking on the **“VPOI Chip”** button. Follow the instructions until you are finished. Then select **“VPOI Device”** again and click on the **“FT Chip”** button. Follow the instructions until you are finished. This Visual Poi device is now fully updated.

Continue the same way with the next Visual Poi device you own, do not forget to update both the VPOI and FT chip every time.

Congratulations! All your Lighttoys devices should be now running the latest firmware.

Finishing steps

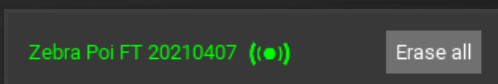
If you are updating from a very old firmware, it is recommended that you perform the following clean up steps to ensure correct behavior:

Reset the FT remotes

Turn ON the FT remote, attach it to the computer with a USB cable and launch LtComposer. Go to the **“Devices”** menu and click the button **“Reset”**.

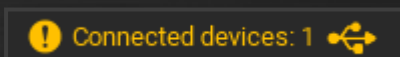
Erase all shows

Connect the Lighttoys device to the LtComposer, in the Upload dialog click the **“Erase all”** button:

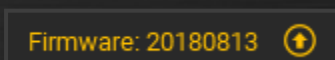


Auto-detection of the old firmware

When you attach any Lighttoys device running an old firmware, LtComposer will automatically detect it and display it in the status bar in orange message:



Clicking on the message will bring you to the Devices menu, where you can see exactly which device needs to be updated, with a small arrow icon that brings up the update assistant automatically:



So, you do not need to worry about forgetting to update some of your devices, you will be notified about it the moment you attach them to LtComposer :)

Frequently Asked Questions

Question: "I followed the instructions exactly, but I see Status: FAILED at the end of the update process, repeatedly."

Answer:

- 1) Turn OFF any nearby Bluetooth, WIFI or other FT devices.
- 2) Disconnect the FT remote from the USB cable, turn it OFF and ON, reconnect it. Turn OFF and ON the device being updated.
- 3) Move the FT remote really close to the location of the FT chip in the device (this is often next to the power button, or inside the LED head for staffs)
- 4) click the "Retry" button.

Question: "After a successful update, the first time I turn on the prop, it behaves strangely."

Answer:

During the first start, the internal configuration of the FT device might be migrated from an old format to a new one. Turn the FT device OFF and ON again, the behavior should be back to normal.

Question: "Can I use Lighttoys props with different firmware versions together?"

Answer:

Different firmware versions might work together, but they were untested by the Lighttoys team. To enjoy a trouble-free experience, please always update all your Lighttoys props.

*We wish you many great moments
with Lighttoys FT!*

