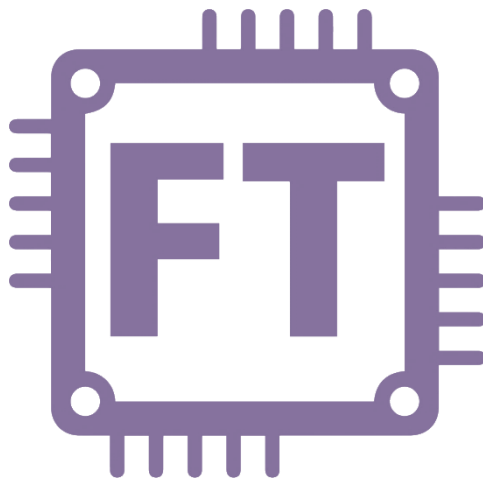


Pyroterra Lighttoys

presents

FUTURE CHIP TECHNOLOGY



FT loader application

v1.2 (ENG)

Introduction

FT loader is a PC application for easy control of your Lighttoys FT devices. It is used for uploading and running your programmed light sequences (shows), checking devices status and more. In this guide we will explain all these features, so you can become light programmer as fast as possible. 😊

First run

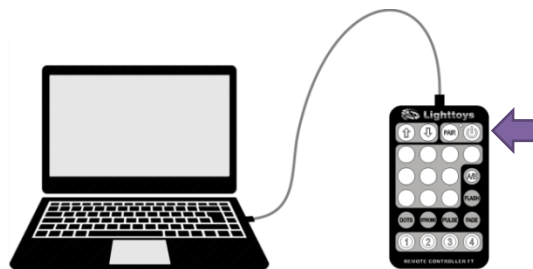
FT loader is compatible with Microsoft Windows (version 7 and newer) and also Mac OS X (10.11 El Capitan and newer).

To start the application on Windows, simply run the “**FT loader.exe**” executable file. On updated Windows 10 you can run the app from anywhere on your drive, on older Windows you need to make sure the libraries “**msvcp140.dll**” and “**vcruntime140.dll**” are in the same folder as the EXE file.

Driver installation

Plug your FT remote to the PC with a USB cable and turn the FT remote on with the ON/OFF button.

A suitable driver will be installed automatically when you are connected to the internet.



Troubleshooting

Problem: *“The program can’t start because api-ms-win-crt-runtime-l1-1-0.dll is missing.”*

Solution: Make sure that your Windows are fully updated and that you have Visual C++ Redistributable for Visual Studio 2015 installed (available from the ‘drivers’ folder that comes with the software).

Problem: *“Driver installation failed or no suitable driver found.”*

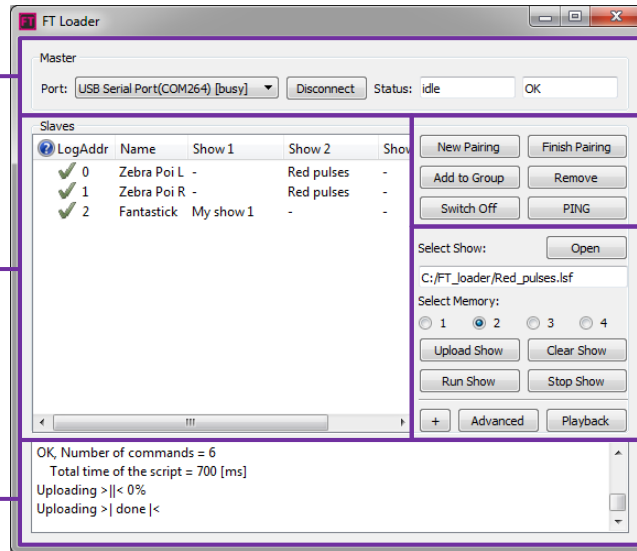
Solution: Install the mcp2200 driver manually from the ‘drivers’ folder that comes with the software.

FT loader overview

status bar
connects FT remote and shows its status

device list
shows all paired FT devices and uploaded shows

status log
shows recent activity

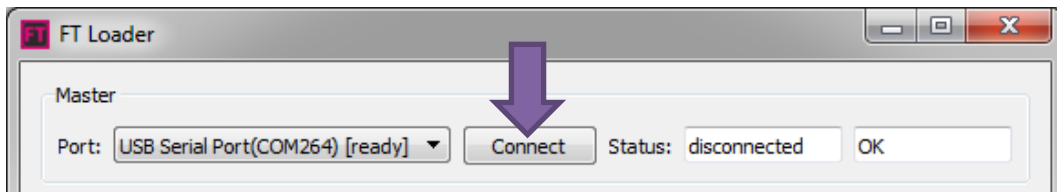


pairing commands
create new pairing or add/remove a device from group

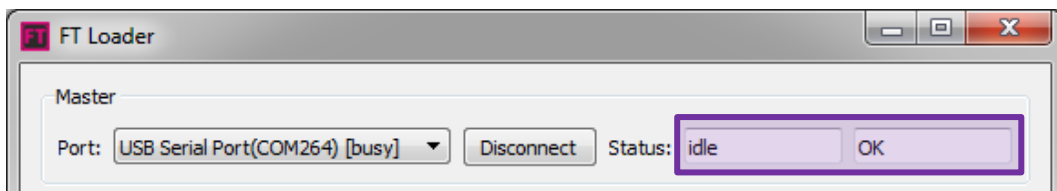
show commands
upload new shows, start/stop shows

Connecting FT remote


Make sure that your FT remote is connected to the PC with a USB cable and turned on (the blue indication LED shines steadily). Now click the 'Connect' button in the app:



The status bar should indicate successful connection between FT remote and FT loader by displaying "idle", "OK":



Hint

 If you can't connect the FT remote, try selecting different port in the left drop-down menu. Also, make sure that mcp2200 driver is successfully installed.

Device list

Device list shows all FT devices currently paired to the connected FT remote. It shows the device status, device name and name of uploaded shows:

Slaves					
LogAddr	Name	Show 1	Show 2	Show 3	Show 4
✓ 0	Zebra Poi L	-	Red pulses	-	-
✓ 1	Zebra Poi R	-	Red pulses	-	-
✗ 2	Fantastick	My show 1	-	Enigmatic	-

Device status



The FT device is ON and actively communicating with the FT remote



There is no response from the FT device – it is probably turned off.

Device name

You can give unique names to your FT devices. Simply double click on the name you wish to change, edit the name and press ENTER to save:

Slaves					
LogAddr	Name	Show 1	Show 2	Show 3	Show 4
✓ 0	Zebra	-	Red pulses	-	-
✓ 1	Zebra Poi R	-	Red pulses	-	-
✓ 2	Fantastick	My show 1	-	Enigmatic	-

Note: A purple arrow labeled 'double click' points to the 'Zebra Poi R' name in the table.

Useful tips



Press the '+' button to show more details about the device, like voltage of the battery, temperature or signal strength.

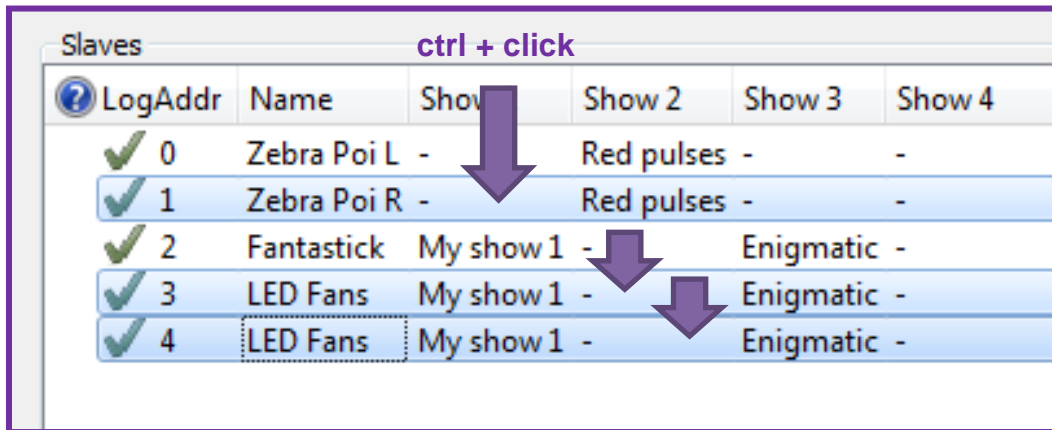


Press the 'PING' button to flash the LEDs of selected FT devices in white color. This is helpful when many devices are paired and you need to locate specific device.

Selecting multiple devices

To make it easier working with multiple devices at once, you can select several of them in the list and perform common actions, like:

- upload show
- delete show
- PING device(s)
- run show



Press and hold a key on your keyboard and left click your mouse, to perform these actions:

Ctrl + click: add/remove the device from your selection (highlighted with blue color)

Shift + click: (de)select all devices in a range

Ctrl + A: (de)select all devices in the list

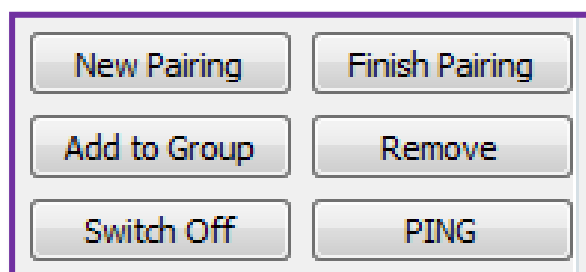


If you don't select any device from the list, the commands are performed for all units in the device list.

Pairing commands

These buttons serve similar function as a long press of the PAIR button on the FT remote.

But as a bonus, you can add or remove a selected FT device from existing group.



New Pairing – starts a new pairing procedure. After pressing the button, you can start pairing FT devices (which are turned off first) by pressing their power button for 3 seconds. For more instructions how to do this, check out: ***Lighttoys FT – quick start guide.***

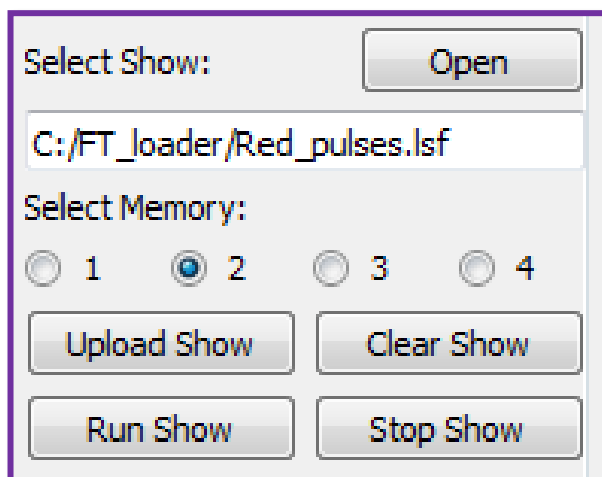
Finish Paring – finalizes the pairing procedure. Click after all your FT devices are paired.

Add to Group – enters the pairing procedure again, but instead of creating a new group, the current one is used and additional FT devices can be added as extra units. Click '**Finish Pairing**' to complete the pairing procedure.

Remove – removes the selected FT device from current group.

Switch Off – turns off the selected FT device.

Show commands



These controls are used to open your Isf shows, upload them to selected FT devices and run them.

To prepare your programmed light sequence (show), please use our [LtComposer3](#) software, or consult our manual ***Lighttoys FT - data format handbook*** if you want to create the code manually.

Click '**Open**' button to select your Isf file, it will remain selected until another Isf file is opened.

Select the active memory bank by pressing the radio button 1, 2, 3 or 4. You can upload different show into each memory bank.

Upload Show – if no error is found in the code, this button starts uploading the selected Isf show file into the memory bank 1, 2, 3 or 4.

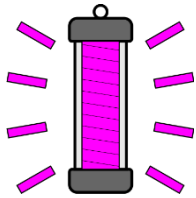
Clear Show – deletes the content of the selected memory bank.

Run Show – starts running the show in the selected memory bank.

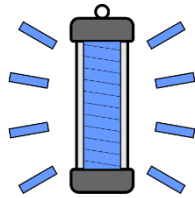
Stop Show – stops the currently running show.

Upload indication

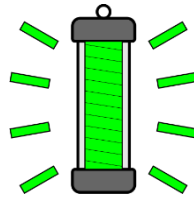
Show upload is indicated in two ways – as a progress bar in the status log (bottom of the application), and also on the FT device LEDs – by pulsing in the color of the respective memory bank:



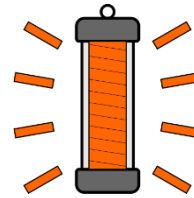
Memory 1



Memory 2



Memory 3

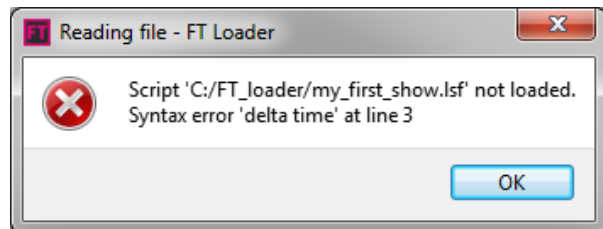


Memory 4

Error messages

If the Isf code is not written correctly, error messages can pop up when you try to upload the show.

Correct the indicated errors, save the file and try the upload again.



Useful tips

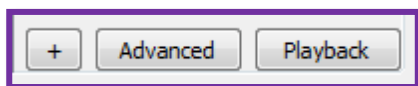


Make sure that FT devices are no more than 2 meters away from FT remote when uploading shows. This will minimize the chance of upload error.



You can upload the same show to multiple FT devices at once, but there is a higher chance of upload error. If the upload fails, select fewer units and start the upload again.

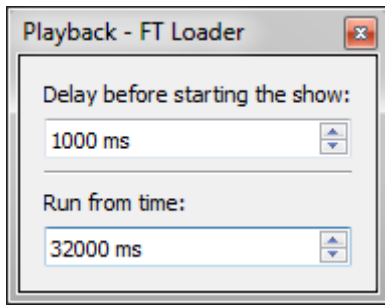
Special functions



These controls offer additional functionality that might prove useful.

+ - expands the table and shows additional information like voltage of the battery, device temperature or signal strength.

Advanced – used for service operations like updating the device firmware. For more information check out our guide [Lighttoys FT – Firmware update](#).



Playback – enables

- 1) to delay the start of the show
- 2) to run the show from specific time in the code (handy for testing parts of long sequences).

In our example, the show will start after **1 second** delay and will begin at **32 second** mark in the code.

*We wish you many great moments
with Lighttoys FT!*

