

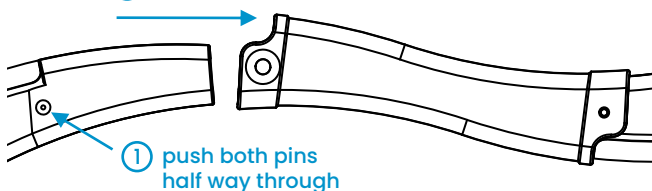
LED Buugeng FT2

assembly & use

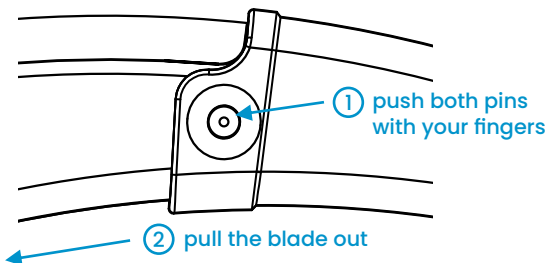
Thanks for your purchase of the LED Buugeng FT2!
To guarantee many hours of enjoyment, please
follow these steps closely.

1. Assembly

② slide the blade in until it clicks.

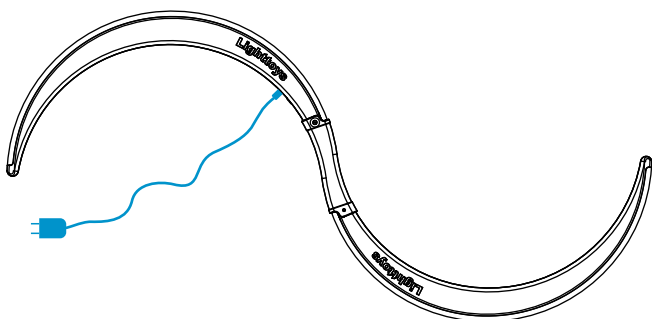


2. Disassembly



3. Charging & use

Each buugeng blade contains a separate battery. To properly charge both batteries to 100% capacity, **always charge & use in the assembled state.**



We wish you many great moments with the LED Buugeng FT2!